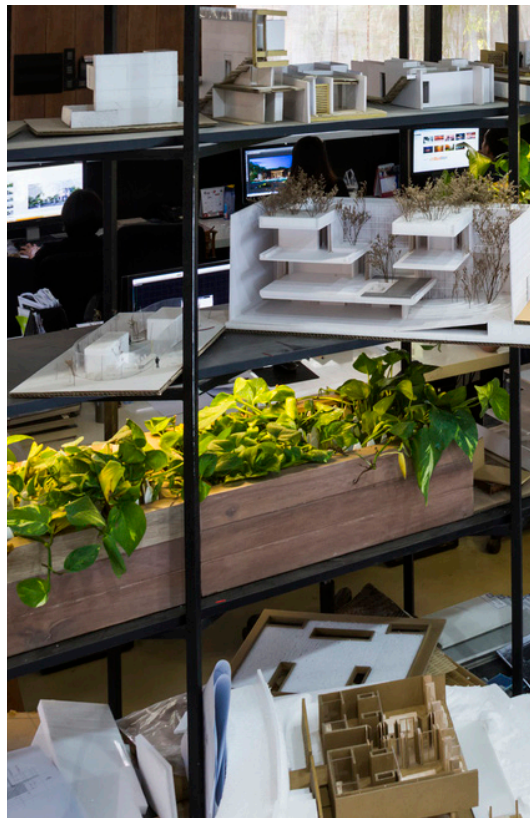
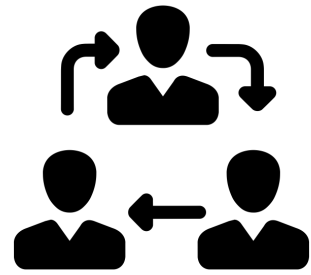


# case STUDY

G2workplacedesign



**BIANCA**abreu +  
**CATERINA**garcía



## collab oration

workers are encouraged to work **together** to form creative solutions to everyday problems

by collaborating, different ideas are introduced to the various members of the team, allowing for **creativity** to flourish

collaboration encourages higher **trust** levels among coworkers



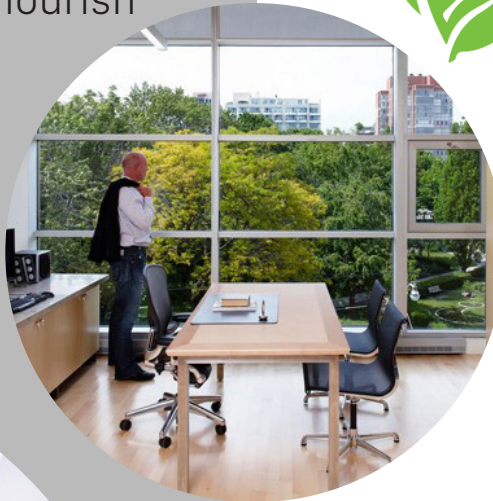
## natu re



employees are interested in more access to nature throughout the day, this allows for **restoration** and **rejuvenation** from work place stresses

increased contact with nature **reduces stresses** and contributes to overall **improved health** of employees

studies show that "exposure to nature can foster **wellbeing** and bring about positive changes in **cognition** and **emotion**"



**collaboration** is typically measured by creating a ratio of the number of collaboration spaces compared to the number of employees

**nature** is measured by access to nature views, as well as the use of natural materials in a space, which serve as a reference to the natural environment



**flexibility** is measured by the distribution and variety of space and how it addresses the needs and preferences of various types of employees

**transparency** is measured by the accessibility of other employees (regardless of hierarchical standing) in relation to any other employee

to accommodate various types of workers and their comforts, offices are providing various **seating options** and arrangements to better satisfy the needs of all workers

companies are hiring an increasingly **diverse** workforce, calling for a more **complex** and **dynamic** workspace which caters to the needs of this cutting-edge workforce



flex  
ibility



trans  
parency

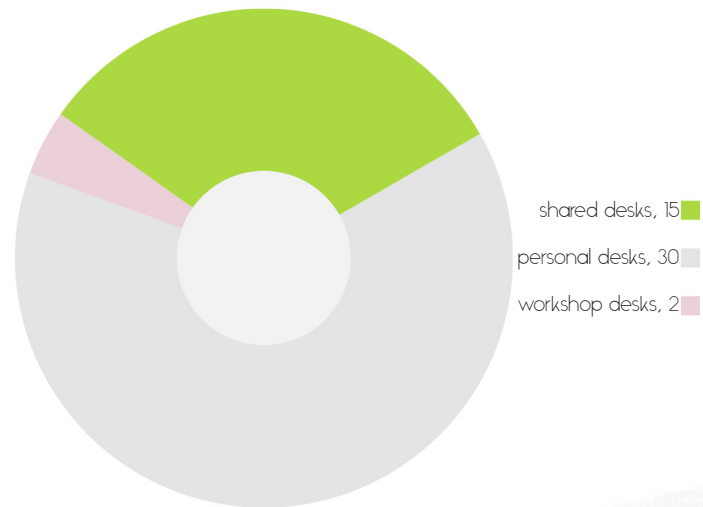
more **integrated communication** both vertically and horizontally between employees

in order to increase productivity, employees are encouraged to communicate and **collaborate** with members of management and administration to promote **equality**

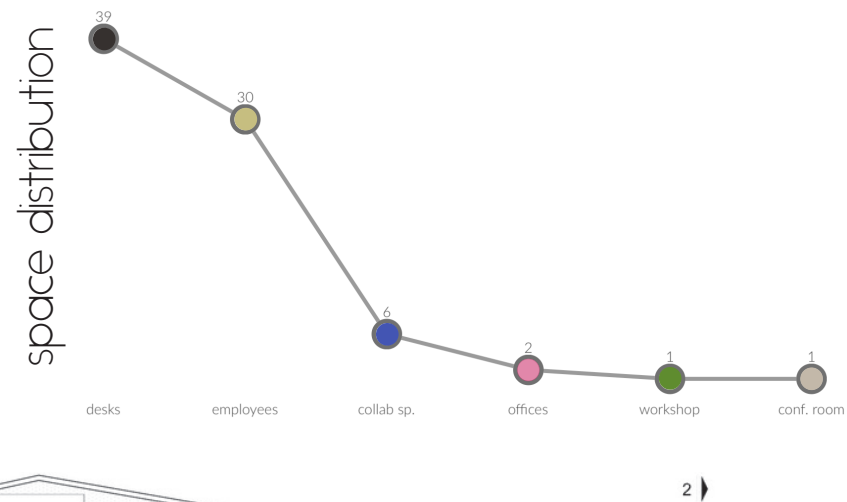




MIA DESIGN STUDIO, 2015  
BINH THANH DISTRICT, VIETNAM



5:1  
employee:collab space



PLAN  
1. entrance  
2. studio  
3. workshop  
4. meetingroom  
5. dry garden  
6. garden  
7. preparation place  
8. river

interior "wall": brings plant life into the space while also serving as a library and dividing the desks from the workshop



flat interior landscape affords uninterrupted views to the outdoor gardens + nearby river



# TRANSPARENCY + COLLABORATION + FLEXIBILITY

various zones allow employees to work where they feel most comfortable, while the extensive glazing found on three different facades provides the integration with the natural landscape

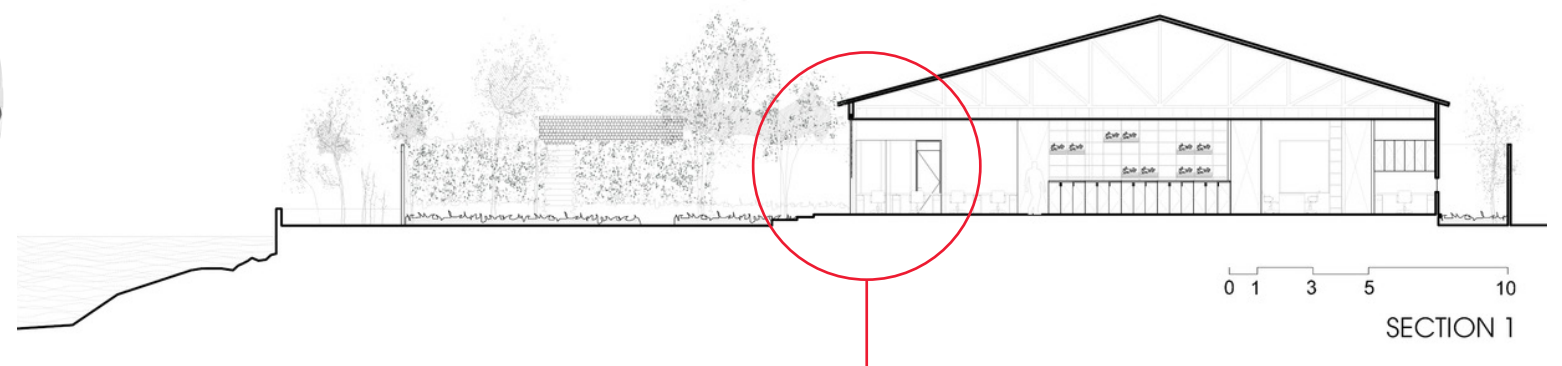


outdoor garden patios provide additional collaboration spaces



collaboration zone

working/personal zone

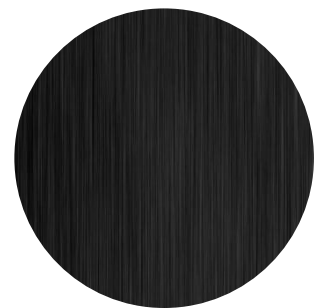


full-glass facade allows for recovery + rejuvenation by having a visual respite from work and access to views of nature





medium stain wood



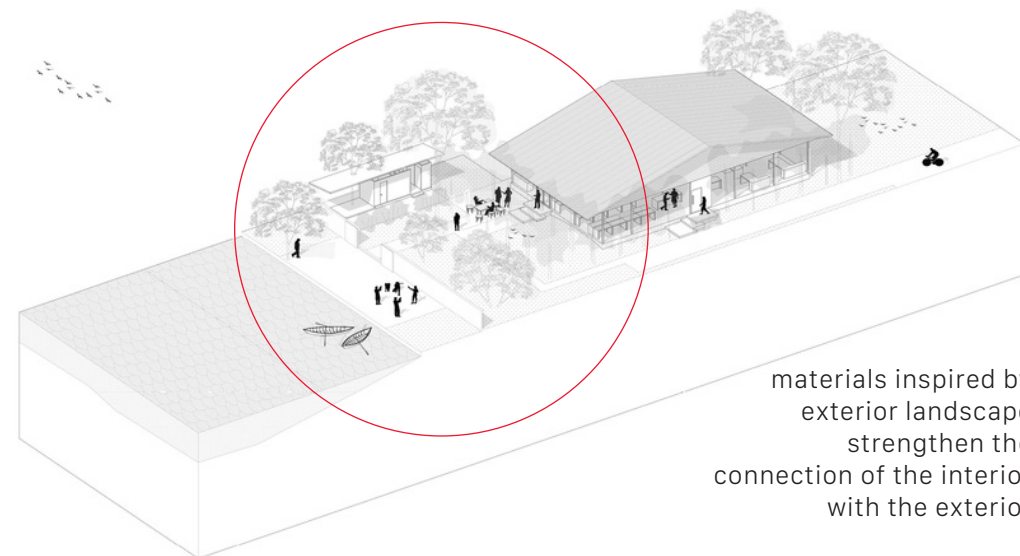
dark stain wood



## NATURE + MATERIALS + DESIGN FEATURES

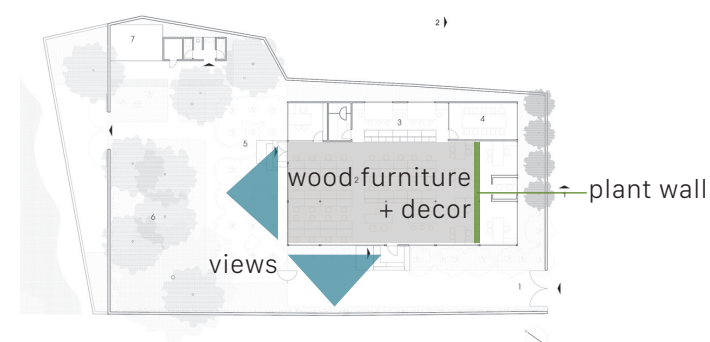


- lighting along perimeter + above task areas: lights circulation (near entrances) and provides task lighting where necessary
- white glossy surface areas also provide a point for light reflectance + contrast with dark casework
- large wooden doors lead to outdoor gardens
- interior dominated by three zones: collaboration, workstations, and the workshop
- rounded furniture offsets geometric casework



materials inspired by exterior landscape strengthen the connection of the interior with the exterior

proximity to river inspired design; meant to give exposure to nature when it is uncommon in Vietnamese society



trees + vegetation



white reflective surface



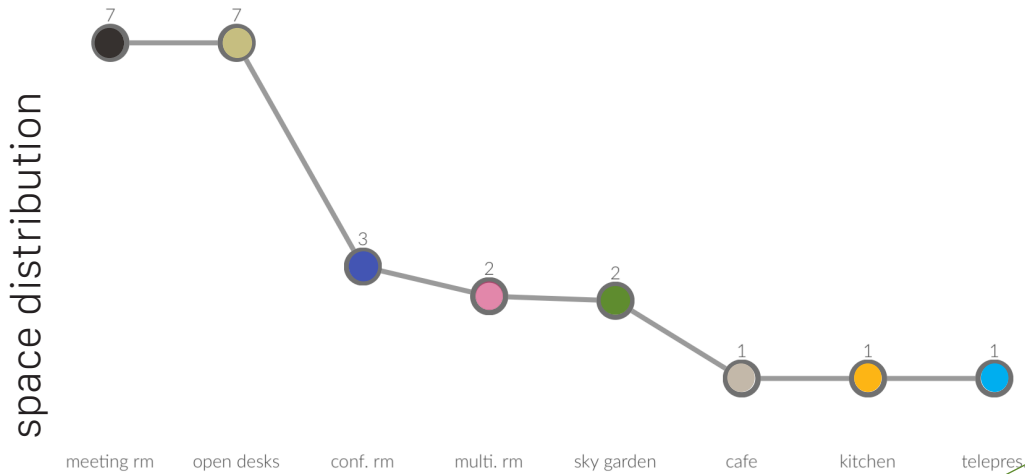
# TELUS GARDEN, 2015

VANCOUVER, B.C., CANADA

150,000 sq. feet  
\$18 million  
LEED Platinum

Telus used local materials to create a nature based concept that emphasizes their status as a leading organization in the world of telecommunications

further reinforcing their brand are the suspended leaf like abstracted from the brand to demarcate the reception area



strategically placed amenities, like the cafe, encourage interconnectivity between employees; contrasting materials and lowered ceilings work together to mark different areas

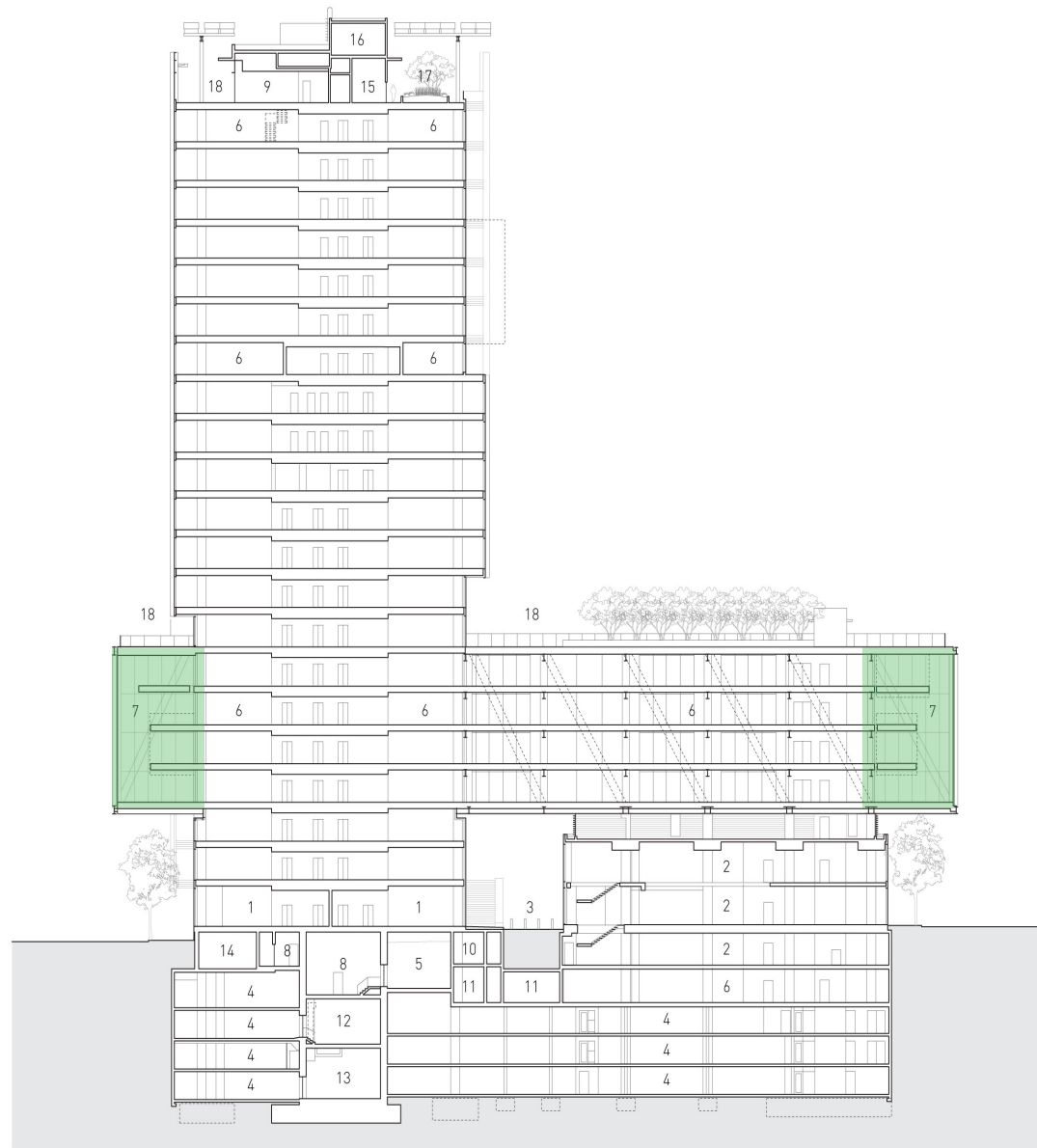






wood clad boxes provide spatial dimension in the reception area & indicate meeting areas that increase programming capacity. neutral tones of wood play against white furniture to provide warmth in the environment while touches of yellow add vibrancy

elongated windows afford for uninterrupted views of the city while also providing a unique connection of workspace to the exterior landscape



- |                      |                      |                           |
|----------------------|----------------------|---------------------------|
| 1 RETAIL             | 7 SKY GARDEN         | 13 ELECTRICAL ROOM        |
| 2 RESTAURANT         | 8 ELEVATOR PIT ROOM  | 14 END OF TRIP FACILITIES |
| 3 LANEWAY            | 9 AMENITY            | 15 STORAGE                |
| 4 PARKADE            | 10 BICYCLE STORAGE   | 16 MACHINE ROOM           |
| 5 PARKADE ENTRY RAMP | 11 BUILDING SERVICES | 17 TERRACE                |
| 6 OFFICE             | 12 TRANSFORMER ROOM  | 18 ROOF GARDEN            |

SECTION  
0 5 10 20m

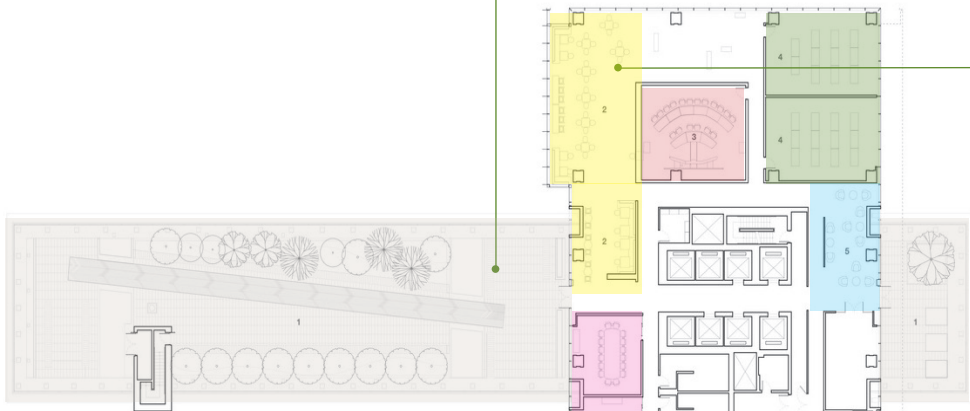
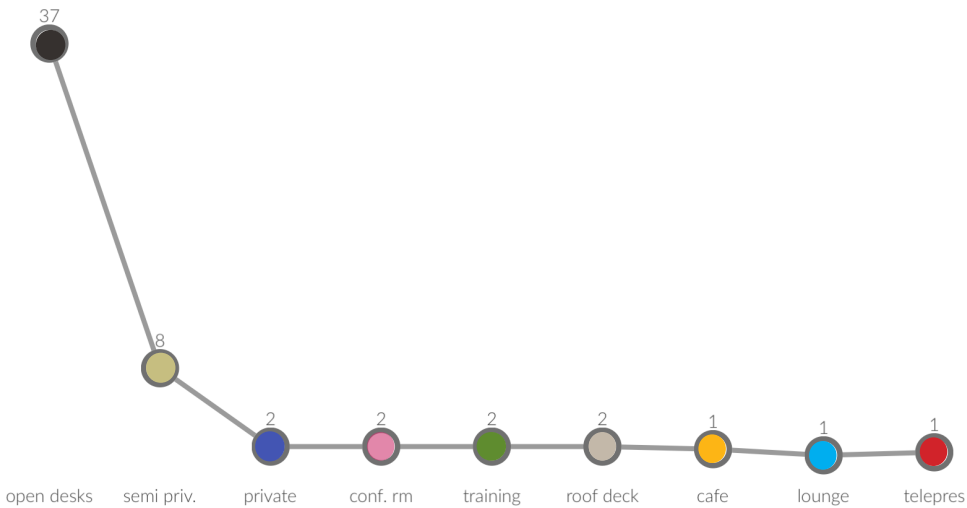
NATURE



# FLEXIBILITY + TRANSPARENCY + COLLABORATION



various flexible furniture arrangements include standing workstations, formal meeting rooms, conference facilities, & lounges to promote impromptu collaborations & teamwork within the workplace environment



- FLOOR 9
- 1 ROOF DECK
  - 2 CAFE FRESH
  - 3 TELEPRESENCE ROOM
  - 4 TRAINING ROOM
  - 5 LOUNGE
  - 6 OPEN WORKSTATIONS
  - 7 SEMI-PRIVATE OFFICES
  - 8 PRIVATE OFFICES
  - 9 TELEPHONE ROOM

**1:6**  
collaboration areas to  
designated desks





## CONCLUSION

Though these 4 themes combined in the workplace create a successful environment, flexibility seems to be the most important.

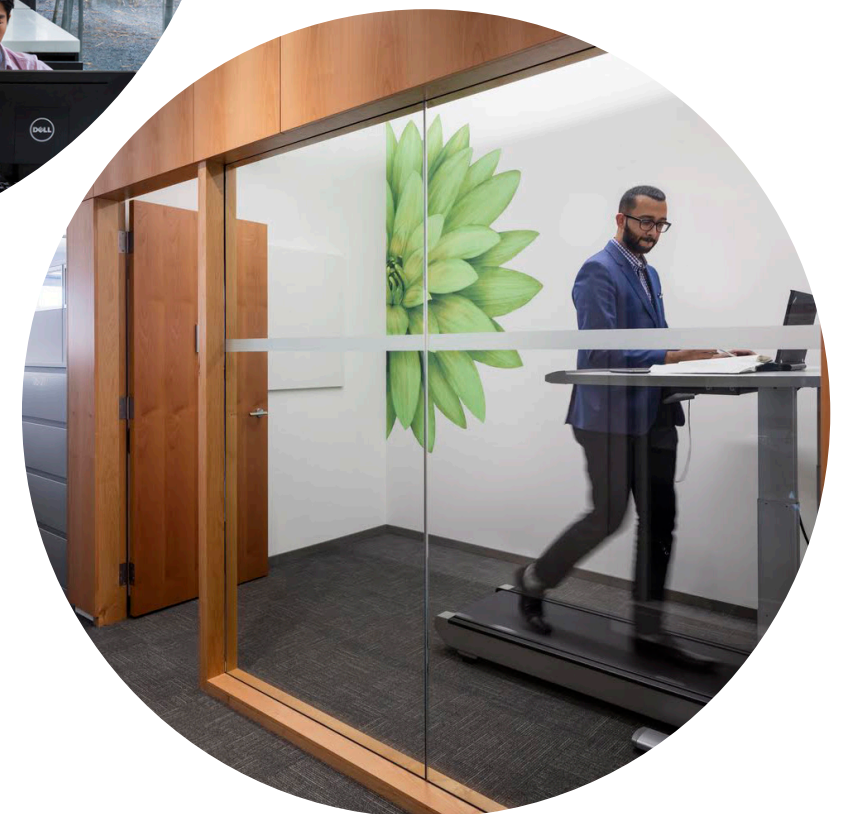
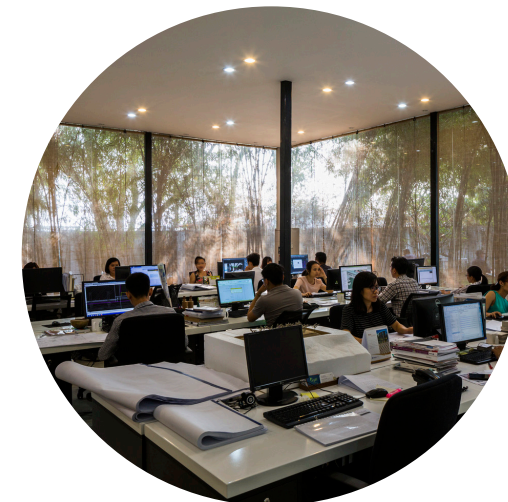
Flexibility when integrated into the workplace, promotes collaboration by driving engagement amongst others that can build team work. Varied meeting spaces foster different work styles which can help employees discover working conditions that suit their specific needs.

## DESIGN GUIDELINES

Create a space which combines **flexibility** in the workplace setting with exposure to **nature** to promote employee well-being and address the individual needs of each employee.

Create a space which encourages the organization's use of **transparency** to promote communication and **collaboration** between all members of the workforce

Use the ideas of flexibility, nature, transparency and collaboration in conjunction with company ideals to create a space which **embodies the energy and vision of the company**.





## REFERENCES

[archdaily.com/788299/mia-design-studio-offices-mia-design-studio](http://archdaily.com/788299/mia-design-studio-offices-mia-design-studio)

[facebook.com/MIA-Design-Studio-318912128211803/](https://facebook.com/MIA-Design-Studio-318912128211803/)

[telusgarden.com](http://telusgarden.com)

[archdaily.com/789062/telus-garden-office-of-mcfarlane-biggar-architects-plus-designers-inc](http://archdaily.com/789062/telus-garden-office-of-mcfarlane-biggar-architects-plus-designers-inc)

[officemb.ca/work/telus-garden/](http://officemb.ca/work/telus-garden/)

[jaga-usa.com/project/telus-gardens-office](http://jaga-usa.com/project/telus-gardens-office)

[sabmagazine.com/blog/2016/06/09/ceu-article-telus-garden/](http://sabmagazine.com/blog/2016/06/09/ceu-article-telus-garden/)

[integralgroup.com/projects/telus-garden/](http://integralgroup.com/projects/telus-garden/)

