



spa design case study

c a t e r i n a
v . g a r c i a



table of contents

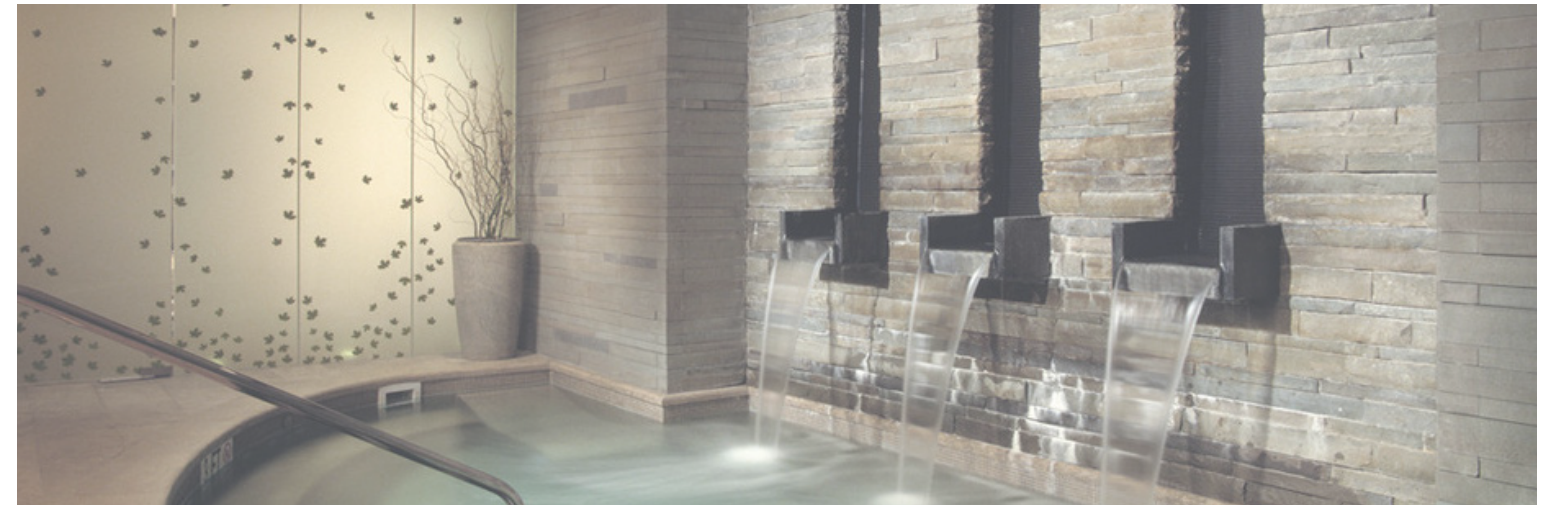
03...	park hyatt beaver creek
04...	phbc location
05...	phbc floor plan
06...	phbc design
07...	aro hā
08...	ah location
09...	ah floor plan + elevation
10...	ah design
11...	references

park hyatt peaver creek vail, colorado

designed by developer east west partners/
hornberger + worstell, 1989 (re-model 2010)

allegria spa focuses on the rejuvenation of the
mind and body

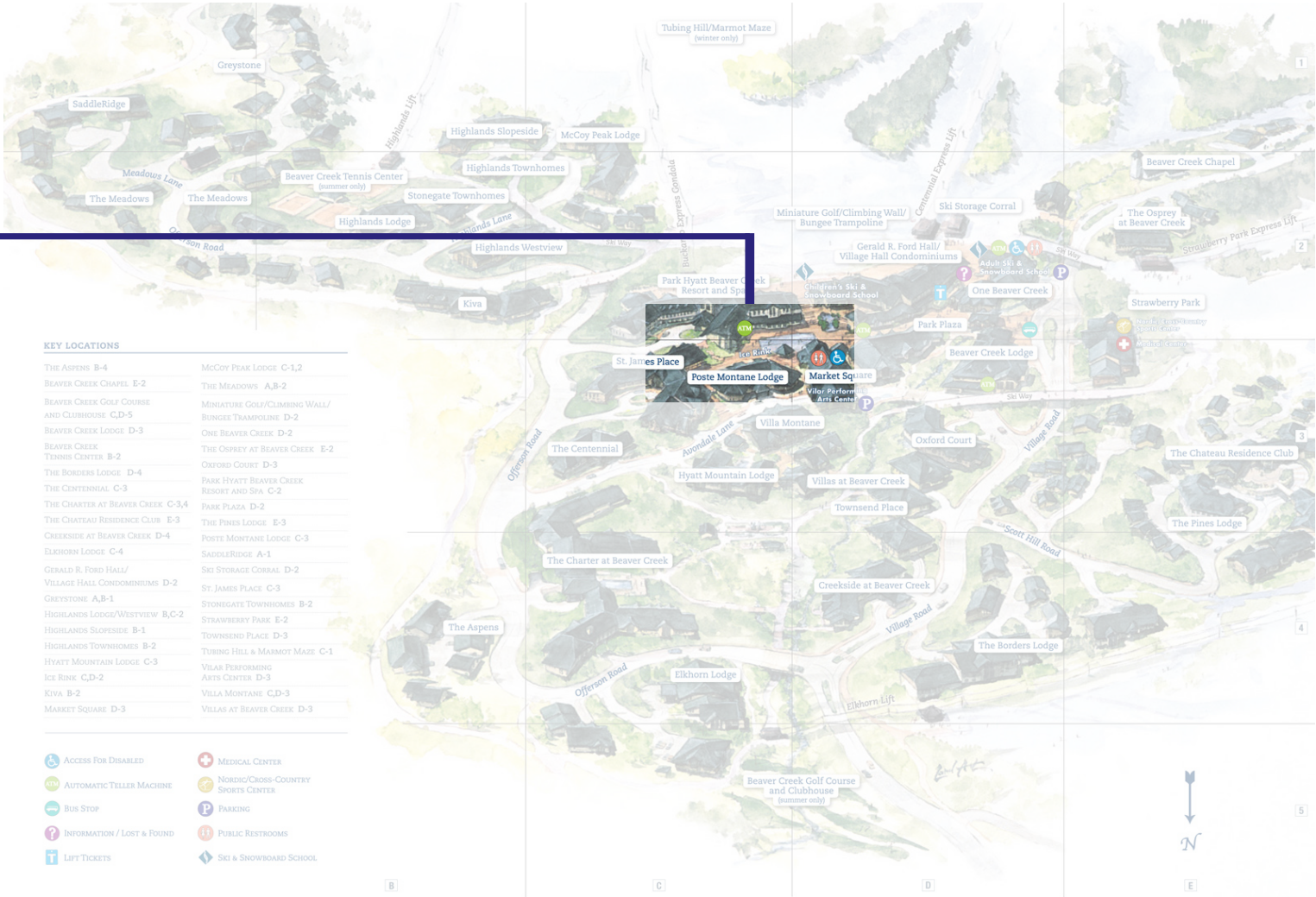
services focus on using elements found in the
natural landscape to provide a total experience to
the client

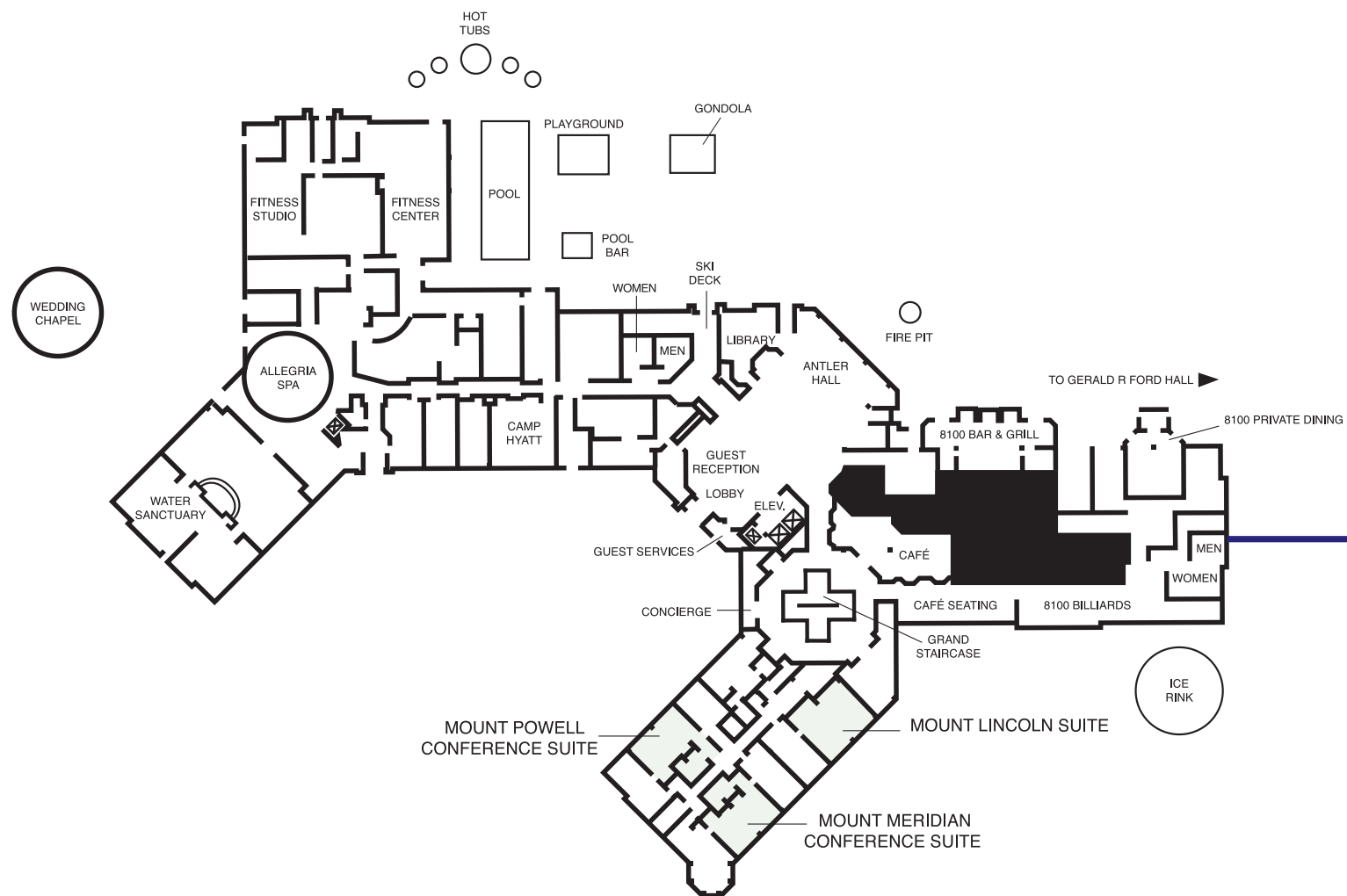


location

spacial planning: spa and treatment rooms overlook the natural landscape created by the rocky mountains in the backdrop

location informs the site by shaping the structure and creating a natural derivative for many of the services offered at the spa





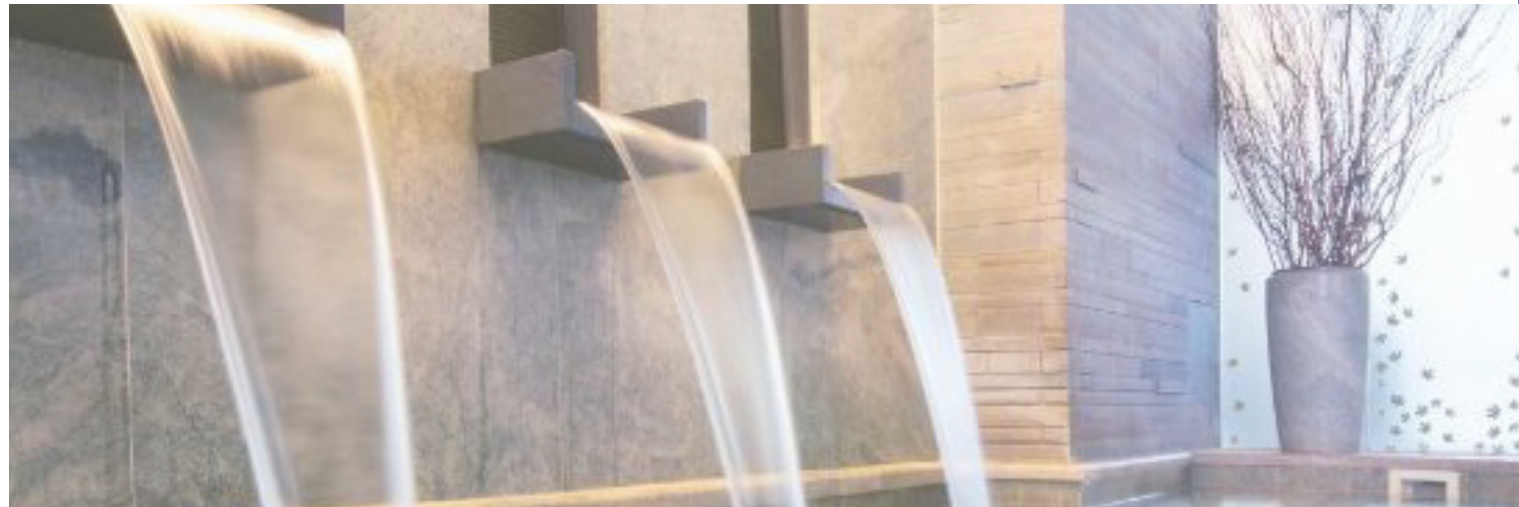
f l o o r p l a n

23 treatment rooms, 190 guest rooms, 22 suites

1 outdoor pool, 5 hot tubs

floor plan dedicates approximately **one-third** of the total floor space to the spa and recreation area

d e s i g n



material focus: wood + glass + stone

lighting: integration of soft, natural lighting,
artificial lighting softened by frosted glass, candle
light

furniture: simple, rustic pieces accompanied by
light colored upholstery



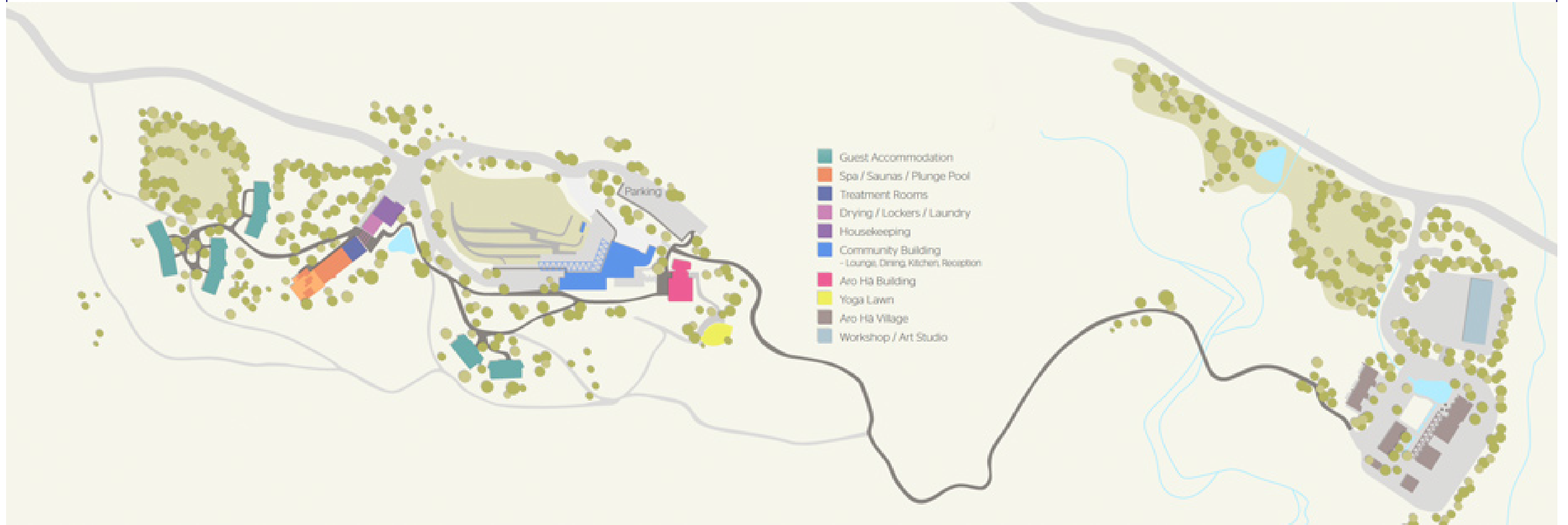
aro hā wellness retreat glenorchy, new zealand

designed by: damien chaparro + tennent and
brown, 2010

translates to “in the presence of divine breath”

mindfulness, connection with others, healthy eating,
reduction in toxicity, active lifestyle, healing

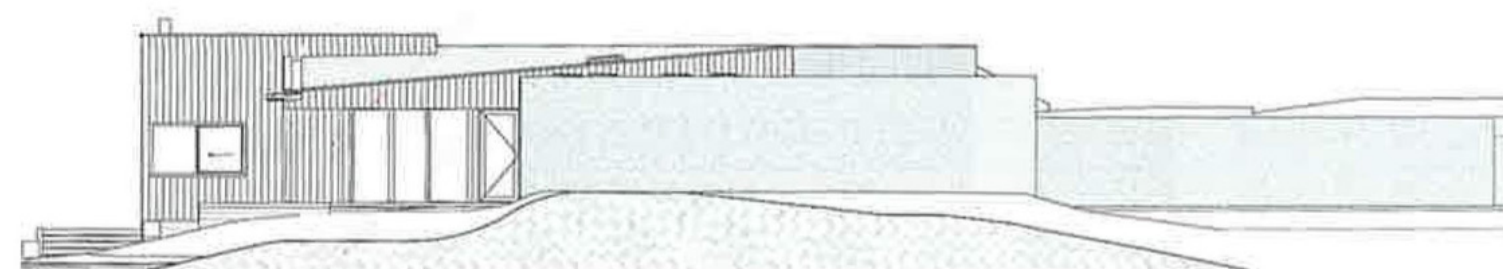
o c a t i o n



the wellness center is located in the heart of new
zealand's southern alps

the complex resides on a sub-alpine terrace that
features expansive views of lake wakatipu

ancient traditions + modern technologies



floor plan + elevation

11 buildings, 12 eco - suites & 8 monastic Singles

massage rooms, dry Finish sauna and a cool infrared sauna, an outdoor hot tub and icy cold plunge pool

the building employs the use of **asymmetry**, which brings about a harmonious integration with the natural environment which surrounds it

design

material focus: wood (siberian larch, american oak, new zealand pine), large glass panels, stone, metal, landscaping

lighting: natural light, spot lighting

space: location is divided into various spaces, such as those for yoga, health, meditation, and communal gatherings

furniture: simple, clean lines; upholstery in light calming colors such as whites, beiges, and soft blues





conclusions

aro ha focuses on the wellness aspect of the spa industry, while the **park hyatt beaver creek** is more focused on the spa and treatments

both spas draw from the **natural landscape** while accentuating it by using large glazed panels and natural elements such as **wood and stone**

by taking into account the effects of the **natural landscape** on the client's experience, both of these spas encourage the clients to both appreciate and **draw strength from their surroundings**



references

aro-ha.com

allegriaspa.com

architectureau.com

beavercreek.hyatt.com

hornbergerworstell.com

fivestaralliance.com

media.newzealand.com